

# THE BUTTONS NX System

**POWER** Light is "on" when premise power is present, flashes to indicate a low battery condition.

**ARMED** Light is "on" when armed, "off" when disarmed. Flashes to indicate a previous alarm.

**INSTANT** Light is "on" when system is set for no entry delay.

**FIRE** Light is "on" to indicate fire alarm, flashes to indicate a trouble condition with your fire alarm system.

**PULL OUT ZONE ID TAB**

**ZONE LIGHTS** are on steady to indicate bypass, slow flash for zone fault, fast flash for service condition.

**Night Time Arming: Press "Stay". System is armed and desired motions are bypassed. Press twice to remove entry door delays.**

**READY** Light is "on" when system is ready to arm.

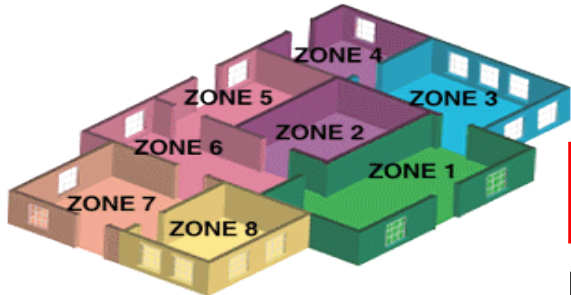
**CHIME** Feature: The keypads will sound a chime when a protected door is opened.

**SERVICE** Light is "on" to indicate a trouble condition with your system.

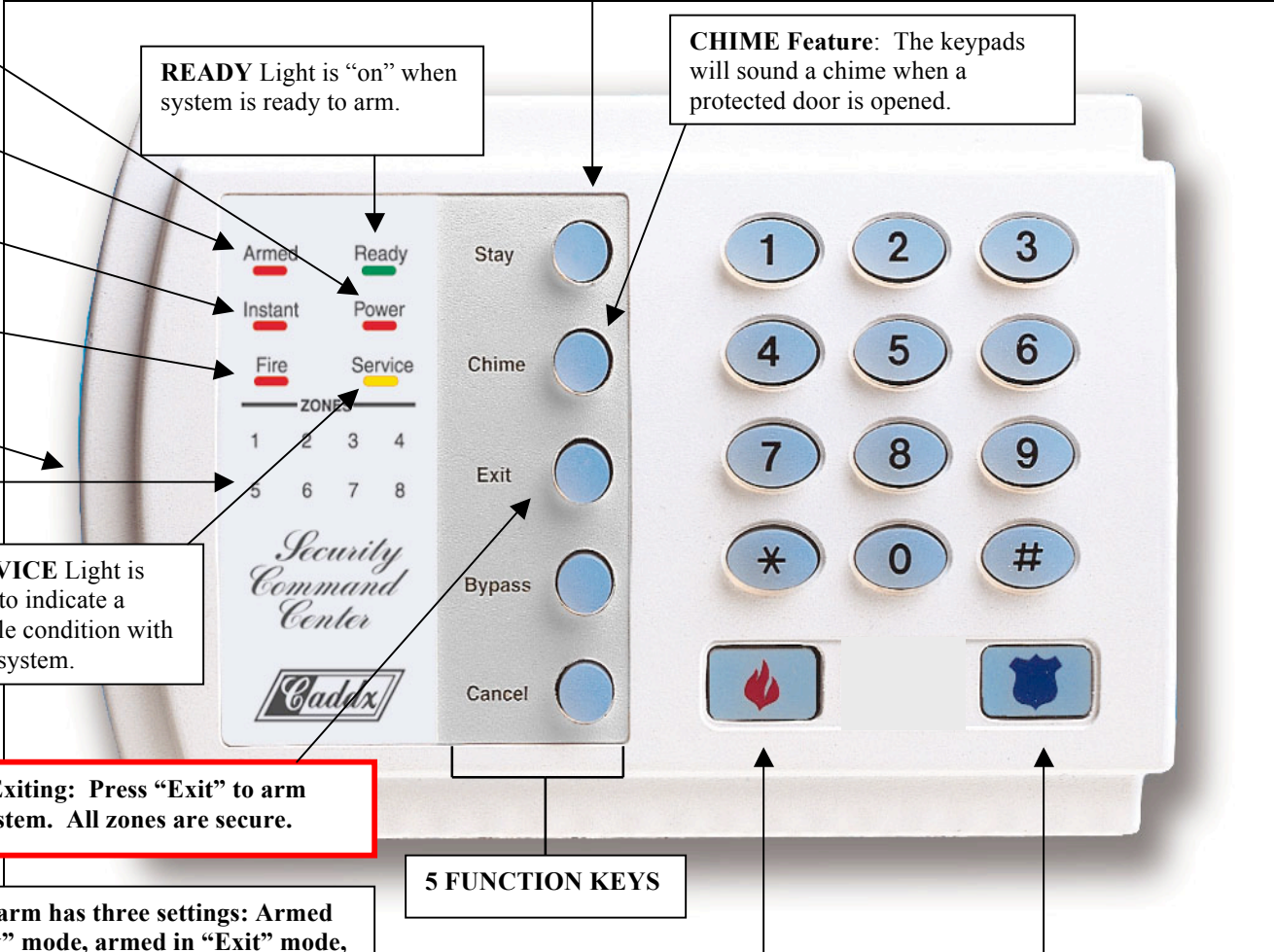
**When Exiting: Press "Exit" to arm your system. All zones are secure.**

Your alarm has three settings: Armed in "Stay" mode, armed in "Exit" mode, and disarmed.

Cancel Feature has been programmed as an automatic feature. This button has no function.



Each zone is a different part of your system. For example: Zone 1 Front Door, Zone 2 Motion Hall, etc.



**5 FUNCTION KEYS**

In case of fire press here. Fire siren will sound.

In need of help press here. This is a silent alarm

**Need more help? Call any time.  
Toll Free 1-800-789-0460**